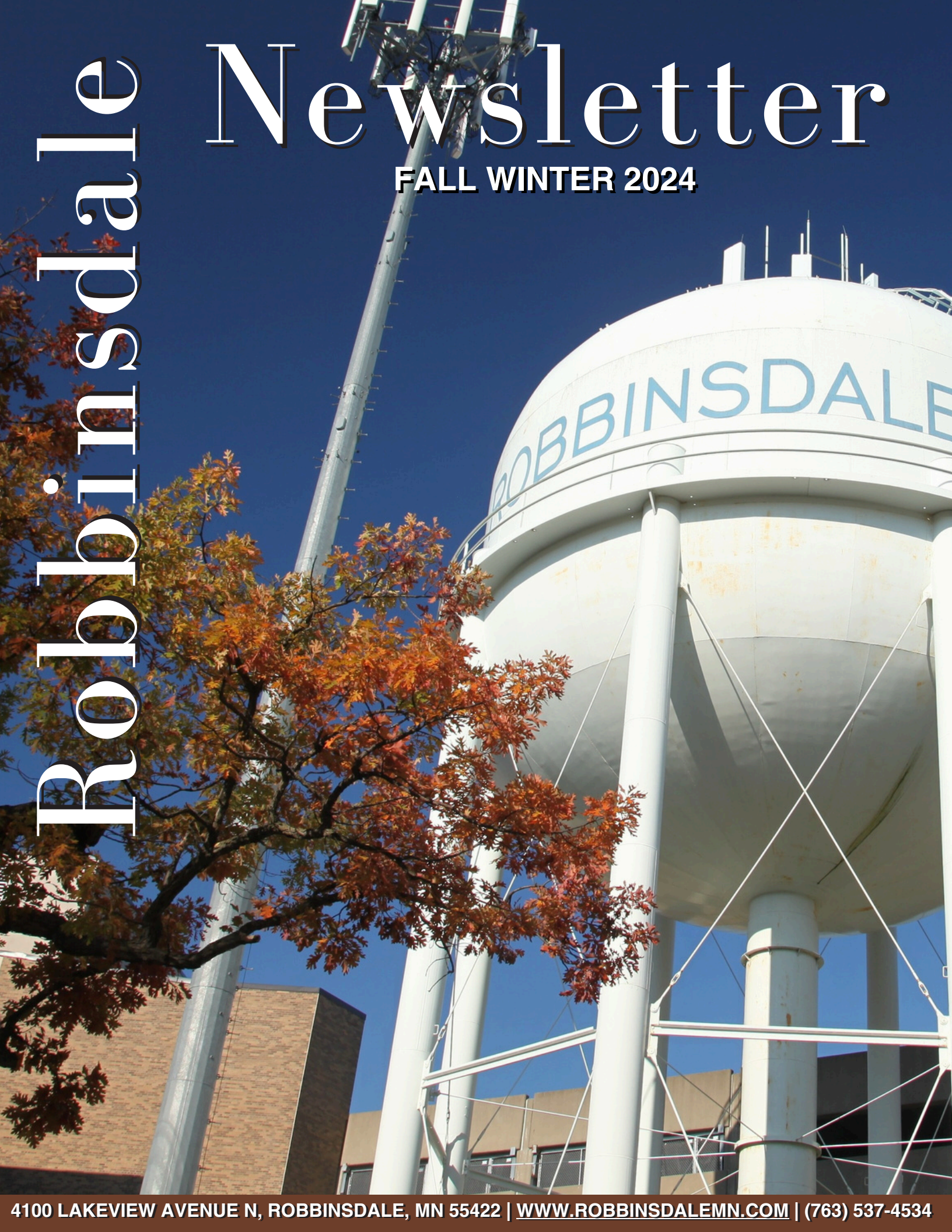


Robbinsdale

# Newsletter

FALL WINTER 2024



# UPCOMING ELECTION NOVEMBER 5, 2024

## What's on the ballot?

- State General Election
- Robbinsdale Ward 1, Ward 2, and Mayor General Election

## When can I vote?

Robbinsdale residents can vote early at City Hall from September 20 to November 4, or at their polling place on Election Day. All eligible voters can vote early — either by mail or in person.

## How do I register to vote?

Register to vote at [www.mnvotes.org](http://www.mnvotes.org).

Find additional election information at [www.robbsdalemn.com/elections](http://www.robbsdalemn.com/elections)

## LIGHT RAIL TRANSIT - BLUE LINE EXTENSION

For the past several months, the Robbinsdale City Council has solicited feedback on the proposed Blue Line Light Rail Extension. Much thanks to those who have engaged through email, by completing the online survey, and by attending an Open House or City Council meeting! In mid-September, the City Council will consider “Municipal Consent” – a process required by statute, where they may:

- Take no action, which results in a “Yes”
- Vote “Yes”
- Vote “No” – If Council votes no, they are required to identify specific concerns, which must be considered by the project office



The project is currently “30% Engineered,” which means there is still work to be done – stay tuned for more ways to connect with City Council and City staff on the project!

## PARKING ENFORCEMENT REMINDERS

Parking complaints are a surprisingly high percentage of complaints that come into the Robbinsdale Police Department. Handling these complaints involves an intricate mix of procedures that must be followed before meaningful enforcement can be taken. The Robbinsdale City Ordinance 1305.03 closely mirrors Minnesota State Statute, which prohibits the parking, stopping or standing of a vehicle in the following places:

- On a sidewalk
- In front of a public driveway
- Within an intersection
- Within 10 feet of a fire hydrant
- In a public park (except upon designated roadways and parking areas)
- Upon a median or driver strip in a street, highway, or road
- Within fifteen feet of the driveway to a fire station and on the side of the street opposite the entrance to the fire station and on the side of the street opposite to a fire station within seventy-five feet of said entrance when properly posted
- At any other place prohibited by law

The rule of thumb is to look for signage or painted curbing when parking your car. If you have any questions regarding this, please feel free to contact the Robbinsdale Police Department at 763-531-1220.

## VOLUNTEER ON A CITY COMMISSION/COMMITTEE

Get involved in your local government! There are currently openings on three commissions and one committee:

**CHARTER COMMISSION:** This commission recommends amendments to the Robbinsdale City Charter to ensure that it remains a usable document that is consistent with state law. There are up to four Charter Commission member openings.

**HUMAN RIGHTS COMMISSION:** This commission advises on matters concerning human rights and serves to educate the community in order to prevent discriminatory activities, assuring fair and equal treatment for the residents of Robbinsdale. There are three openings on the HRC.

**SENIOR COMMISSION:** This commission advises on issues facing our seniors and evaluates the impact of current and proposed programs on seniors. There are two openings on the Senior Commission.

**SUSTAINABILITY COMMITTEE:** This recently formed committee supports and promotes initiatives such as the Robbinsdale Energy Action Plan, and makes recommendations on new programs and policies. Contact Kayla Kirtz at [kkirtz@robbsdalemn.gov](mailto:kkirtz@robbsdalemn.gov) for membership opportunities.

Candidates from under-represented groups are encouraged to apply. Learn more and apply at [www.robbsdalemn.com/commissions](http://www.robbsdalemn.com/commissions).

## WATER EFFICIENCY REBATE PROGRAM

As of July 1, 2024, the Water Efficiency Rebate Program includes rebates on WaterSense® showerheads! Customers of the Robbinsdale Water Utility can apply for a rebate through the Water Efficiency Rebate Program when you replace existing inefficient toilets, washing machines, dishwashers, or showerheads with WaterSense® or Energy Star® certified appliances. Rebates are available for 75% of the cost of the item, up to a maximum of:

- \$100 for WaterSense labeled Toilets
- \$100 for Energy Star labeled Washing Machines
- \$100 for Energy Star labeled residential Dishwashers
- \$100 for WaterSense labeled Showerheads

To encourage water conservation, the Water Efficiency Rebate Program is funded, in part, by a grant from the Metropolitan Council to reduce municipal water use in both residential and commercial properties within the city. Visit [www.robbinsdalemn.com/watergrant](http://www.robbinsdalemn.com/watergrant) to find the application and more information.



## SIGN UP FOR AN ORGANICS RECYCLING CART

Organics recycling provides a feel-good benefit, helps the environment, and results in a visible reduction in trash. ALL Robbinsdale utility customers are charged \$3.50 monthly for organics recycling (reflected as \$7.00 on your bimonthly utility bill). Visit [www.robbinsdalemn.com/organics](http://www.robbinsdalemn.com/organics) to request a cart today, as well find more information on how organics recycling works!



## BYPASS YOUR WATER SOFTENERS

Robbinsdale's Water Treatment Plant has been fully operational and distributing soft water to Robbinsdale water customers since November of 2022. Therefore, the City recommends discontinuing use of in-home water softeners. You can bypass your water softener by turning, pushing, or pulling the valve on the back of the unit to the bypass setting. While the unit is in bypass mode, staff recommend disconnecting the unit from any power source. If you have already bypassed your old water softener, you can choose to leave the old softener in place while not in use, or you can have a plumber perform the necessary pipework (with a permit) and remove your softener. Frequently asked questions about the Water Treatment Plant and more details about bypassing water softeners can be found at [www.robbinsdalemn.com/water](http://www.robbinsdalemn.com/water).



## ROBBINSDALE'S MN GREENCORPS MEMBER WRAPS UP SERVICE

On August 14, 2024, Noah Knapp concluded his MN GreenCorps service term at the City of Robbinsdale. When asked what his biggest accomplishment has been over the last 11 months, Knapp states,

“One accomplishment I'm really proud of is updating the City's electric and gas benchmarking. I teamed up with Public Works/Engineering and another MN GreenCorps Member to ensure the accuracy of our City building data in a state-wide software called B3 Benchmarking (Buildings, Benchmarks, and Beyond). We also added around 35 or 40 electric meters, which helps the City understand its energy use better.”

In recalling highlights of his year, Knapp also mentioned the efforts of folks throughout the community. He emphasized that working with the Energy Action Team was especially inspiring. Knapp is considering doing another year of MN GreenCorps service next year. Thank you for your incredible work in Robbinsdale, Noah!



For more information about the City's sustainability efforts, please contact: **Kayla Kirtz, Sustainability Coordinator**  
[kkirtz@robbinsdalemn.gov](mailto:kkirtz@robbinsdalemn.gov) or [763-233-5654](tel:763-233-5654)

## RENEWABLE ROBBINSDALE

Help us lower greenhouse gas emissions in Robbinsdale to reach our clean energy goals! Subscribe to Renewable\*Connect Flex from Xcel Energy and you can power your home with a combination of wind and solar energy. You get to claim the Renewable Energy Credits with no equipment needed, and it costs only a few extra dollars a month. Sign up today by filling out the form at [xcelenergy.com/renewableconnect](http://xcelenergy.com/renewableconnect)





### CRYSTAL LAKE WATER QUALITY

Crystal Lake has been on the Minnesota Impaired Waters list since 2002 due to the lake's high-level of nutrients. Excessive nutrients, such as phosphorus, can negatively impact the health of the lake by promoting nuisance algae growth. Throughout the last four years, the City of Robbinsdale and the Shingle Creek Watershed Management Commission (SCWMC) completed the following water quality improvement activities at Crystal Lake:

#### *Invasive Carp Management*

SCWMC oversaw the removal of 9,641 common carp (about 28,000 pounds) from Crystal Lake from 2021-2024. Common carp are an invasive fish species that negatively impact water quality by stirring up and resuspending phosphorus-rich lake bottom sediments. Panfish, such as bluegill and yellow perch, will help control the remaining carp population by eating the eggs of spawning adults.

#### *In-Lake Alum Treatment*

Crystal Lake received in-lake treatments of a chemical called "alum" in September 2021 and September 2022. The two treatments are helping to improve water quality by limiting phosphorus levels and increasing clarity in the lake. Both treatments will remain effective and continue to support improved water quality for several years into the future.

#### *Crystal Lake Flocculation Treatment Plant*

This year marked the twelfth year of operation of the Crystal Lake Flocculation Treatment Plant. This facility, located in Lakeview Terrace Park, is designed to remove phosphorus and other pollutants from the lake water. Tours of the Flocculation Treatment Plant will resume in 2025.

Water quality improvements resulting from these three projects are already being observed by City staff and park visitors. City staff are optimistic that Crystal Lake's water quality will continue to improve in the coming years. Funding for the projects listed above came from the City of Robbinsdale, the SCWMC, and the United States Environmental Protection Agency.

For more information about the City's efforts to improve local water bodies, please contact:

**Jenna Wolf, Water Resources Specialist**  
[jwolf@robbinsdalemn.gov](mailto:jwolf@robbinsdalemn.gov) or 763-458-1788

### LOWER TWIN LAKE WATER QUALITY

Lower Twin Lake is part of the Twin Lakes Chain, which includes Middle Twin and Upper Twin. The chain of lakes is not on the Minnesota Impaired Waters list, however, there are different water quality improvement activities happening on all three lakes to make sure the chain stays off the list. Robbinsdale is actively working on monitoring and removal of Curly Leaf Pondweed, an aquatic invasive species (AIS), from Lower Twin Lake. The SCWMC is also performing common carp surveys on all three lakes to determine the population. It will help decide if removal efforts are needed.

### RESPONSIBLE SALT USE

Residential, commercial, and municipal use of deicing salt use has been on the rise since the 1950s. Consequently, aquatic chloride (salt) levels have become so high that many of Minnesota's lakes and streams are now considered unhealthy for fish and insects. Chlorides harm plants and animals, contaminate drinking water, corrode vehicles, and damage infrastructure. You can use deicing salt responsibly and keep Robbinsdale's lakes and streams clean, safe, and enjoyable by adhering to the following guidelines:

- Prevent ice build-up by shoveling snow soon after it falls.
- Sweep up leftover salt and reuse it at a later time.
- Leave about 3 inches between grains of salt that you scatter.
- Generally speaking, a 12-ounce coffee mug of salt is enough to cover 10 sidewalk squares or a 20-foot driveway.





## FALL SHADE TREE SALE

Robbinsdale is partnering with Tree Trust to host a municipal shade tree sale this fall. This program allows residents to purchase a range of tree species below wholesale prices to encourage reforestation and ash tree replacement. Interested residents can buy up to two trees for their yard at \$40 each. Trees are a manageable 7- or 10-gallon size for ease of transporting and planting. We are excited to offer this program again to residents! Visit [www.robinsdalemn.com/forestry](http://www.robinsdalemn.com/forestry) to purchase a tree.

## PUBLIC RIGHT-OF-WAY TREE PLANTING

If you have a treeless spot in front of your residence, the City would love to hear from you! The City Forester plants bareroot trees in open areas along boulevards and rights-of-way every fall and spring. We do ask residents to water new trees with the provided slow-draining watering bag. Contact the City Forester to request a tree.

## ASH TREATMENTS & EMERALD ASH BORER

Since 2016, all public ash trees in Robbinsdale have been undergoing treatments once every three years to protect them from the emerald ash borer (EAB). This year the City Forester retreated 126 public ash trees. If you have an ash that still has less than roughly 30% canopy dieback, we recommend you treat it as soon as possible. The City has a list of qualified companies that provide treatment services on the Forestry webpage. We wish to thank those residents who have been treating their ash tree(s).

## PUBLIC TREE PRUNING

The City owns and prunes over 6,000 trees across public landscapes, parks, boulevards and rights-of-way. Robbinsdale is divided into 6 pruning zones, with the intention of pruning every public tree in a selected zone each dormant season. Since beginning this pruning scheme in 2016, routine damage from storm events has decreased in frequency. This coming dormant season, we will be pruning in the central corridor of Robbinsdale between the railroad and County Road 81. Remember: please do not prune any public trees! If there is a tree obstructing a road or sidewalk, a broken or cracked limb, or other public tree matter requiring attention, please contact the City Forester.

The best time to prune trees is from November to March, since branching is easier to assess, and insects or diseases are inactive. Also, if you have an oak tree, it is important to only prune it between November and March to prevent the spread of oak wilt disease. If you have any questions about your private trees, please contact the City Forester.

## POLLINATOR-FRIENDLY NATIVE PLANTS

There has been a recent decline in the population of monarch butterflies, bees and other pollinators. If you have a sunny section of your yard, consider a more drought-resilient & wildlife-friendly landscape by starting a native prairie garden! Fall is a great time to plant native plants due to cooler weather. In addition to well-known species like bee balm and coneflowers, native grasses such as big and little bluestem, Indian grass, and sideoats grama are important components in any native landscape. Grasses provide habitat, physical support of wildflowers, and add visual interest. The City maintains numerous prairies and raingardens populated with native plant species throughout Robbinsdale. Bee or pollinator friendly lawns are another alternative to turfgrass lawns that can provide nectar and pollen for pollinators and can be regularly mowed. Please see the City website for further resources on pollinator-friendly lawns.



For more information about the City's forestry and natural resources efforts, please contact:

**Stephan Papiz, City Forester/Natural Resources Specialist**  
[spapiz@robinsdalemn.gov](mailto:spapiz@robinsdalemn.gov) or 763-531-1273

## YARD WASTE COLLECTION

The final day for yard waste collection is expected to be on Friday, November 15, 2024, weather dependent. As a reminder, yard waste is picked up on your regular trash day.



## CREDIT CARD FEES BEGINNING IN 2025

To help lower transaction fees, the City of Robbinsdale is transitioning to a 2.95% fee for credit and debit card payments beginning on January 1, 2025. This change will affect all credit and debit card payments including those made in City Hall or online, as well as utility bill, building permit, and business license payments. Note that this change does not affect ACH payments.

## CURRENT AND UPCOMING STREET RECONSTRUCTION

### 41st Avenue

The City of Robbinsdale began reconstruction of 41st Avenue between Regent Avenue and Railroad Avenue on Monday, August 19, 2024. This project includes the installation of water mains, sanitary sewer mains, and storm sewer infrastructure including catch basins, pipes, and storage chambers. The curbs and road surface will also be reconstructed. During this project, access across 41st Avenue will be limited, and full closures will change daily depending on where the underground work is occurring. Work is expected to be completed on October 11, 2024, weather permitting.

### 2025 Street Reconstruction Projects

#### Chowen Avenue from 43rd Avenue to Shoreline Drive and Shoreline Drive from 41st Avenue to County Road 81

Starting in Spring of 2025, the City will be reconstructing these street segments. The project will also extend into Shoreview Road and Grimes Avenue (from Shoreline Drive to 42nd Avenue). This project will include the replacement of water mains, large and deep sanitary sewer mains, relocate a sanitary lift station and storm sewer infrastructure including catch basins and pipes. The curbs and road surface will also be reconstructed along with cyclist provisions. The survey work for this project is nearing completion and staff will soon be reaching out to residents with an initial design layout to seek feedback. This is a very large and complex project that will take around 2 years to complete.

#### York Avenue (from Lakeland Avenue to 36th Avenue)

During 2025, the City will also be reconstructing these blocks of York Avenue. This project will include the replacement of water mains, sanitary sewer mains and storm sewer infrastructure including catch basins and pipes. The curbs and road surface will also be reconstructed. Survey work for this project will commence late summer.

Construction updates will be posted on the City Facebook page, in the Birdtown Brief, and on the website. For questions regarding street reconstruction projects, please contact:

**Richard McCoy, Public Works Director/City Engineer**  
[rmccoy@robbinsdalemn.gov](mailto:rmccoy@robbinsdalemn.gov) or 763-531-1260

## PARKS MASTER PLAN

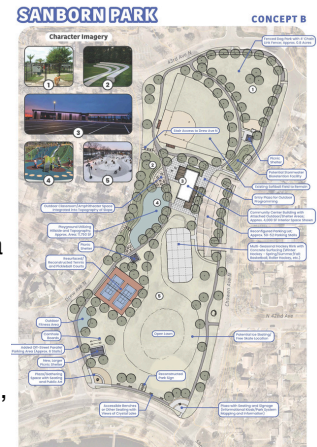
The City of Robbinsdale is currently working with Bolton & Menk and the Parks, Recreation, and Forestry Commission to create a 10-year Parks Master Plan. The intention of the 10-year plan is to improve park access, amenities, and functionality. The City of Robbinsdale and partners recently completed the data collection stage of the process after gathering resident feedback through surveys and community events. Most recently, the City collected input on concepts of Sanborn Park at the Chamber of Commerce Meet & Greet on September 9, 2024 (see concept examples to right).

Recommendations based on the collected data will be presented at a City Council meeting in December.

For more information and a closer look at Sanborn Park concept plans, visit [www.robbinsdalemn.com/parksmasterplan](http://www.robbinsdalemn.com/parksmasterplan)



Sanborn Park Concept A



Sanborn Park Concept B

## SNOW EMERGENCY REMINDERS

During a declared snow emergency, or after a snowfall of at least two inches, parking is prohibited on all public streets, highways, and alleys. All property owners are required to clear snow and ice from their sidewalks within 12 hours. After the snow emergency has ended, give the Fire Department a hand by shoveling around fire hydrants!

The Robbinsdale Police Department uses tip411 to notify the community about snow emergencies, as well as other safety updates. Download the tip411 app or sign up for text and email alerts at [www.robbinsdalemn.com/tip411](http://www.robbinsdalemn.com/tip411) to get notified about snow emergencies.



## AWARD-WINNING WATER TREATMENT PLANT

In addition to winning 3 state-level awards, the Robbinsdale Centralized Water Treatment Plant was recently recognized on a national level with the **American Public Works Association's 2024 Public Works Project of the Year in the Small Cities/Rural Communities - Environmental Category.**



**SEPTEMBER 21**



**Farmer's Market End of Season  
Lakeview Terrace Park  
9:00 AM - 1:00 PM**

**SEPTEMBER 21**



**Story Saturday  
Lakeview Terrace Park  
10:30 AM**

**SEPTEMBER 21**



**Vehicle Fair  
Crystal Community Center  
10:00 AM - 12:00 PM**

**SEPTEMBER 28**



**Paper Shredding Event  
Robbinsdale Public Works  
10:00 AM - 1:00 PM**

**OCTOBER 4**



**Birdtown Boo Bash  
5:00 PM - 7:00 PM  
Sanborn Park  
Followed by a Movie in the Park  
at 7:00 PM!**

**NOVEMBER 5**



**Election Day  
Polls open from  
7:00 AM - 8:00 PM**

**DECEMBER 3**



**Tree Lighting  
Robbinsdale City Hall  
6:00 PM**

**DECEMBER 5**



**Robbinsdale City Band Concert  
Crystal Community Center  
7:30 PM**

**FEBRUARY 7**



**Fire & Ice  
Sanborn Park  
6:00 PM - 8:00 PM**

**MORE EVENTS AND PROGRAMS AT:  
[www.robbinsdalemn.com/register](http://www.robbinsdalemn.com/register)**



**ROBBINSDALE  
RECREATION**

**Robbinsdale City Hall**  
4100 Lakeview Avenue N  
Robbinsdale, MN 55422

**PRESORTED  
STANDARD  
US POSTAGE PAID  
Permit No. 91249  
TWIN CITIES, MN**

**TIME SENSITIVE MATERIAL**

**COUNCIL, COMMISSION, & COMMITTEE SCHEDULES**

**City Council**

1st & 3rd Tuesday @ 7:00 PM City Hall

**Economic Development Authority (EDA)**

2nd Tuesday @ 7:00 PM City Hall

**City Council Work Session**

2nd Tuesday following EDA @ City Hall

**Human Rights Commission**

4th Thursday @ 7:00 PM City Hall  
(No meeting Nov/Dec)

**Sustainability Committee**

3rd Wednesday @ 6:00 PM City Hall

**Parks, Recreation & Forestry  
Commission**

4th Tuesday @ 7 PM

Various Locations

(No meeting Jun/Jul/Dec)

**Planning Commission**

3rd Thursday @ 7 PM City Hall

**Senior Commission**

1st Monday @ 1:30 PM City Hall

(No meeting Jul/Aug/Sep)

\*Additional meetings are scheduled throughout the year.  
Meeting dates are made available on the City website.

**DEPARTMENT OF MOTOR VEHICLES**

4100 Lakeview Avenue N  
Monday - Friday  
8:00 AM - 4:00 PM

The Robbinsdale Deputy Registrar continues to serve Robbinsdale residents through a traditional walk-in, take-a-number system, for the following services:

**MOTOR VEHICLE**

- Tab renewal
- Title transfer
- Replacement title
- Replacement license plates

**DRIVER'S LICENSE & ID**

- Replacement license
- Replacement ID
- Change of address

**DNR LICENSE**

- Watercraft license
- Snowmobile
- ATV & off-road vehicle
- Hunting & fishing

Learn more at [www.robinsdalemn.com/dmv](http://www.robinsdalemn.com/dmv)

**CITY COUNCIL DIRECTORY**

**Bill Blonigan - Mayor**

763-537-7776

[wablonigan@robinsdalemn.gov](mailto:wablonigan@robinsdalemn.gov)

**Regan Murphy - Ward 1**

763-360-0350

[rmurphy@robinsdalemn.gov](mailto:rmurphy@robinsdalemn.gov)

**Jason Greenberg - Ward 2**

612-567-3905

[jgreenberg@robinsdalemn.gov](mailto:jgreenberg@robinsdalemn.gov)

**Mia Parisian - Ward 3**

612-501-9499

[mparisian@robinsdalemn.gov](mailto:mparisian@robinsdalemn.gov)

**Aaron Wagner - Ward 4**

612-405-0583

[awagner@robinsdalemn.gov](mailto:awagner@robinsdalemn.gov)

**Tim Sandvik - City Manager**

763-531-1258

[tsandvik@robinsdalemn.gov](mailto:tsandvik@robinsdalemn.gov)

**SERVICE DIRECTORY**

**City Hall**

763-537-4534

**Police Non-Emergency**

763-531-1220

**Recreation Services**

763-531-1278

**Engineering**

763-531-1268

**Streets/Maintenance**

763-531-1202

**Code Enforcement**

763-531-1269

**Utility Billing**

763-531-1211

**Snow Emergency**

763-531-1275

**DMV**

763-535-8133

**ORDINANCES**

Ordinances are local laws adopted by the City Council that serve as permanent, enforceable legislation.

As of early-September, the City Council has adopted 8 new ordinances in 2024 so far. A list of recently adopted ordinances can be found on the City website,

[www.robinsdalemn.com/ordinances](http://www.robinsdalemn.com/ordinances),

or by scanning the QR code below.



Robbinsdale Newsletter is the official biannual newsletter for the City of Robbinsdale.



City of Robbinsdale, MN - Government



@cityofrobinsdale



@City of Robbinsdale, MN