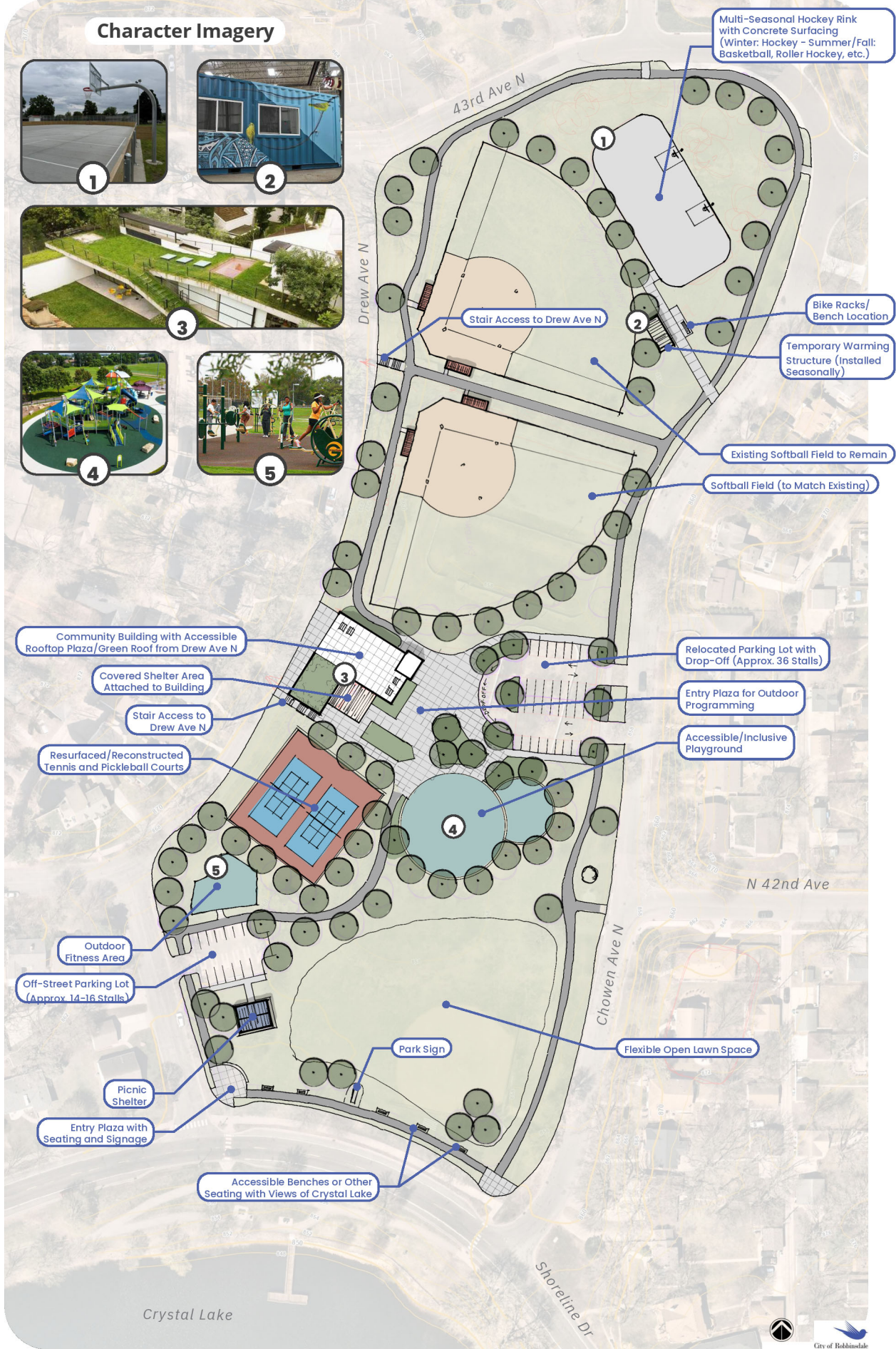


# CONCEPT A

## Character Imagery



Multi-Seasonal Hockey Rink with Concrete Surfacing (Winter: Hockey - Summer/Fall: Basketball, Roller Hockey, etc.)

Bike Racks/ Bench Location

Temporary Warming Structure (Installed Seasonally)

Existing Softball Field to Remain

Softball Field (to Match Existing)

Community Building with Accessible Rooftop Plaza/Green Roof from Drew Ave N

Covered Shelter Area Attached to Building

Stair Access to Drew Ave N

Resurfaced/Reconstructed Tennis and Pickleball Courts

Relocated Parking Lot with Drop-Off (Approx. 36 Stalls)

Entry Plaza for Outdoor Programming

Accessible/Inclusive Playground

Outdoor Fitness Area

Off-Street Parking Lot (Approx. 14-16 Stalls)

Park Sign

Flexible Open Lawn Space

Picnic Shelter

Entry Plaza with Seating and Signage

Accessible Benches or Other Seating with Views of Crystal Lake

Crystal Lake